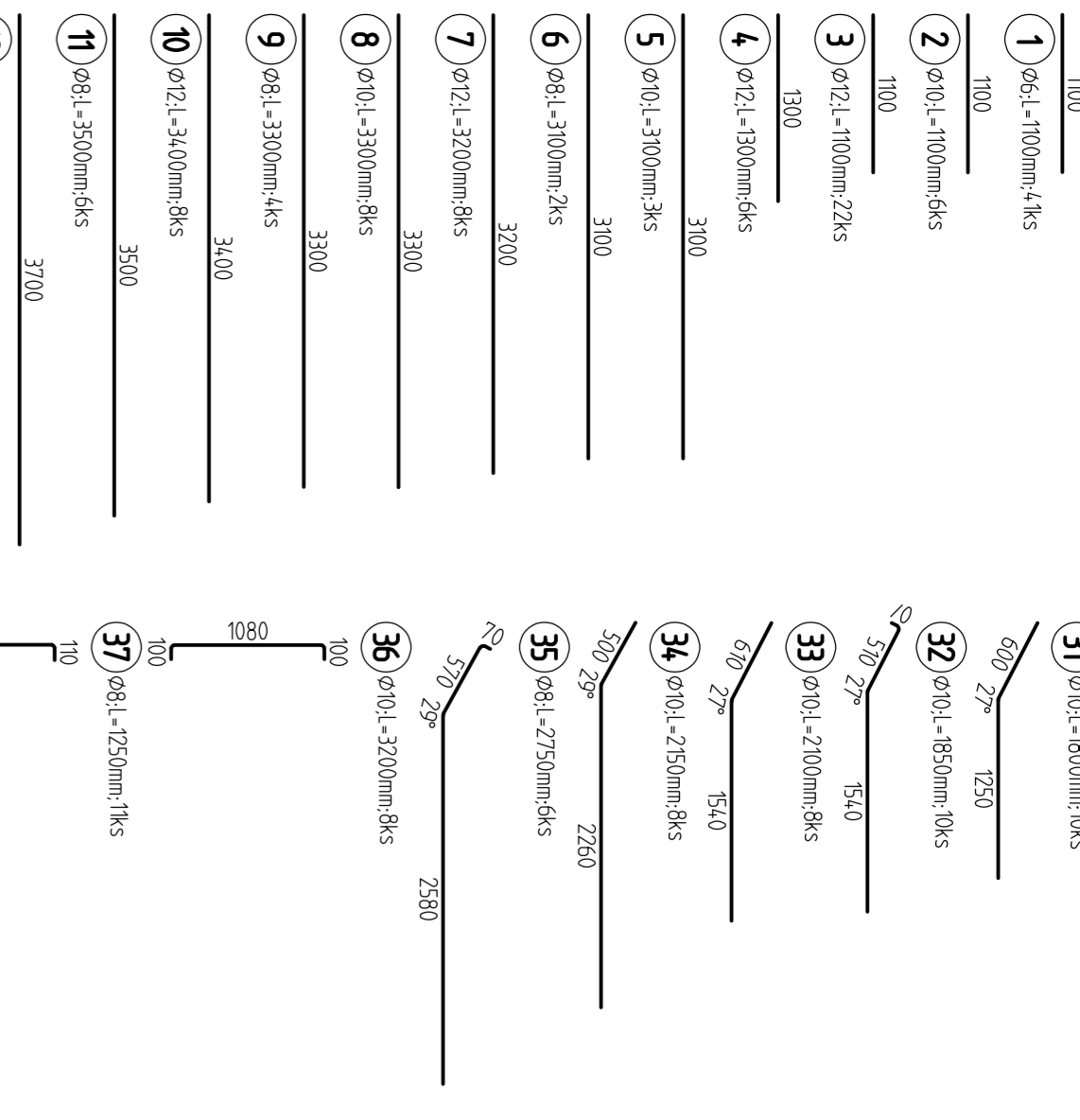
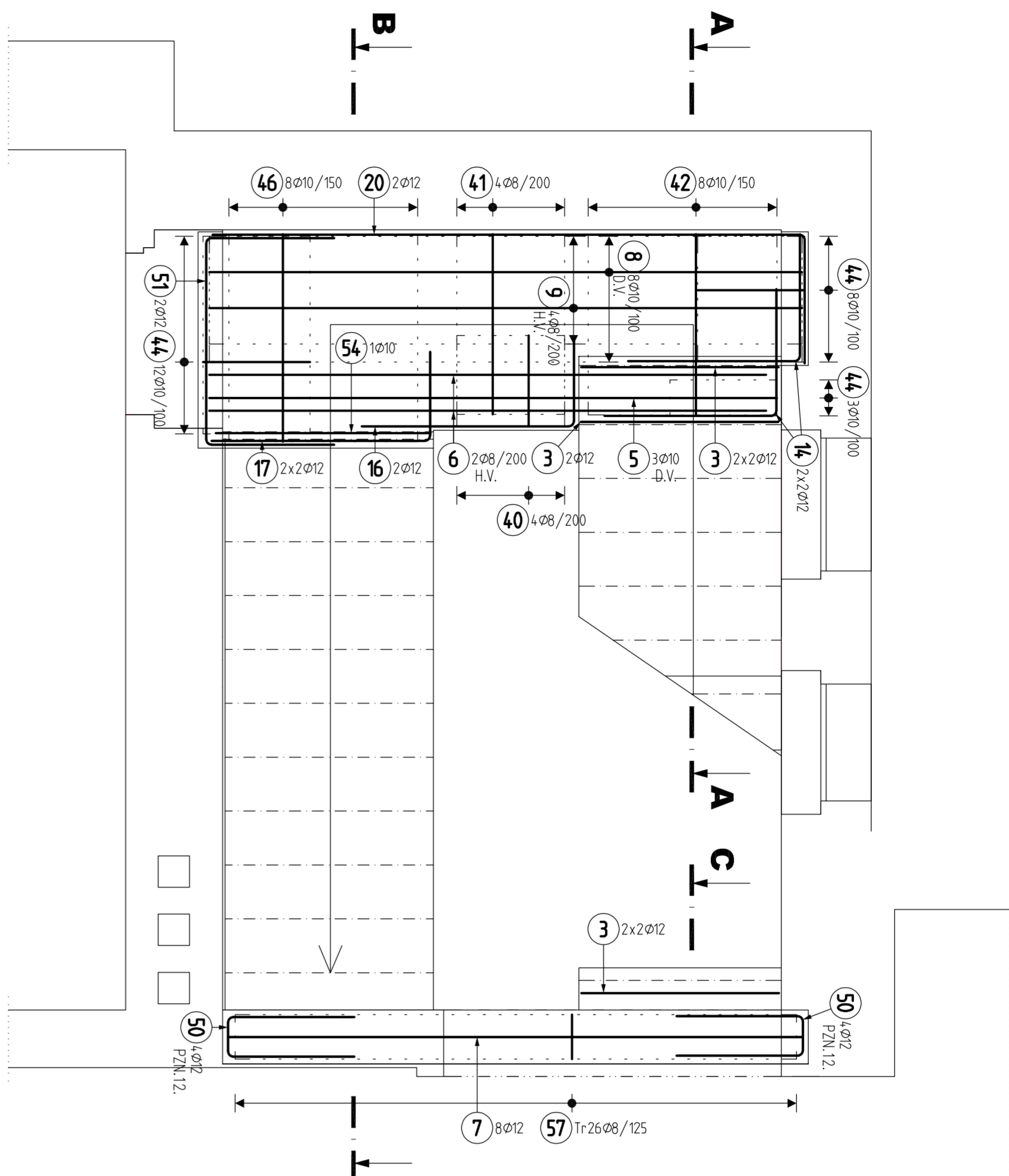


TVARÝ VLOŽEK



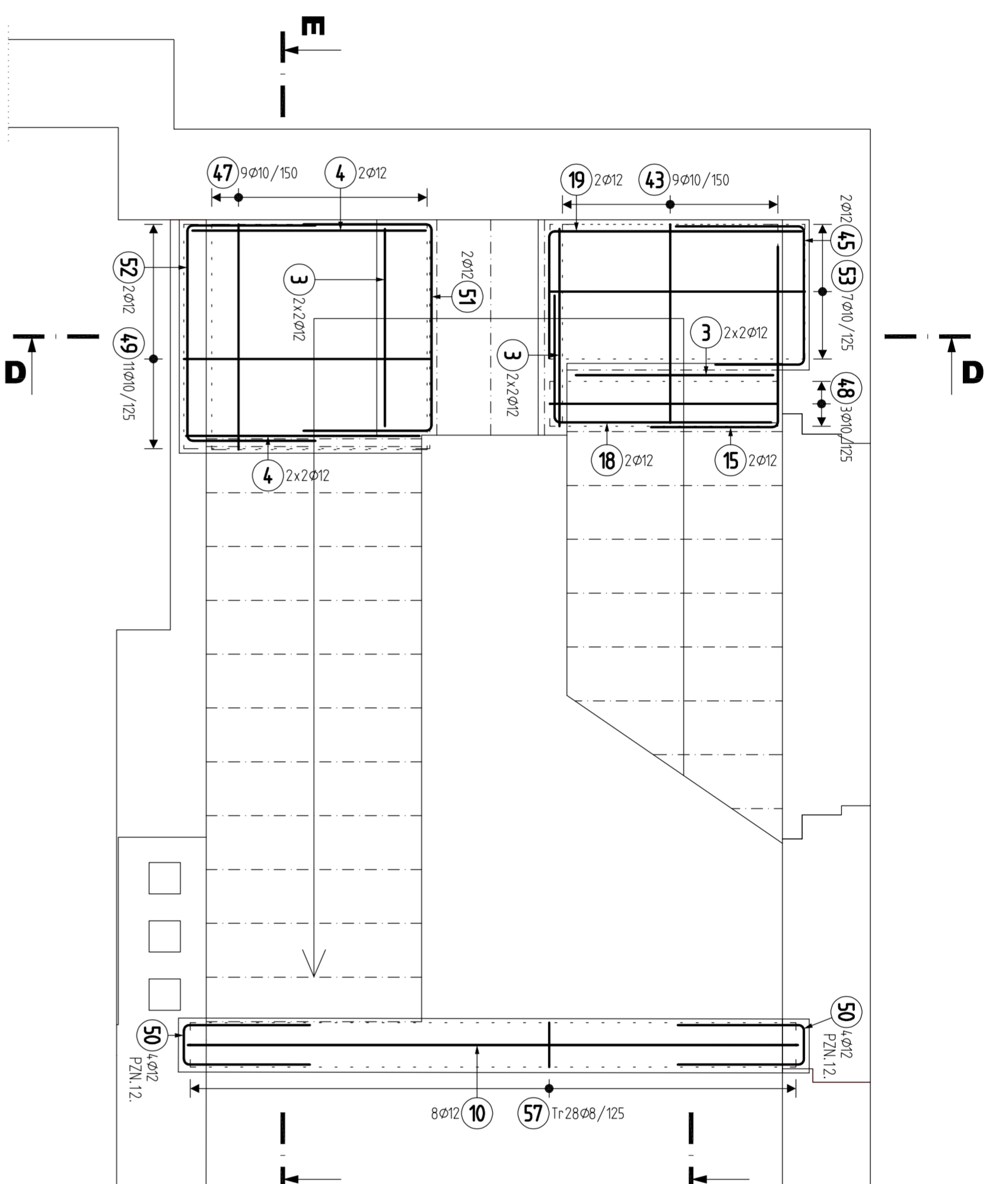
SCHODIŠTĚ 1.PP-1.NP

m1:25



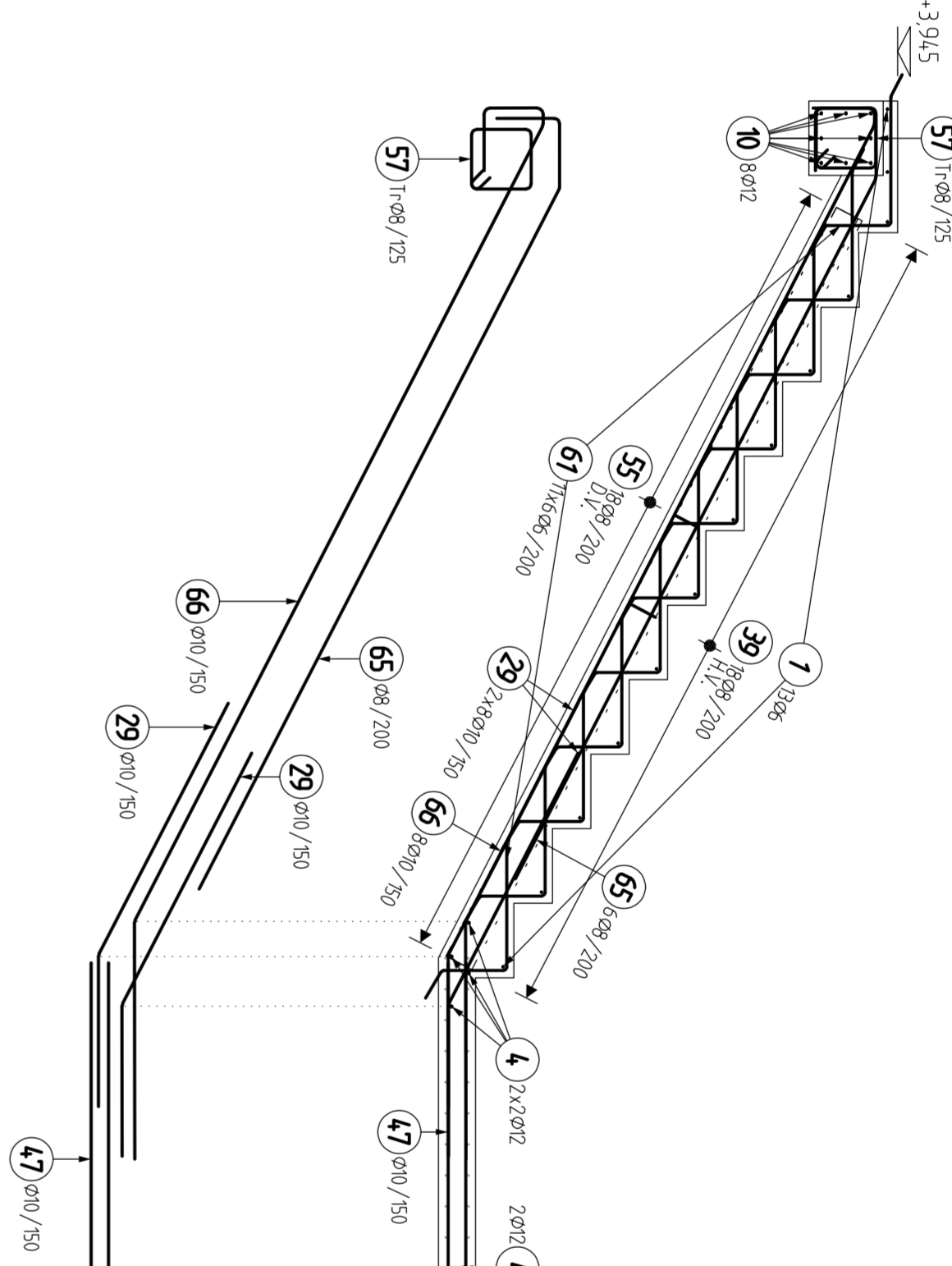
SCHODIŠTĚ 1.NP-2.NP

m1:25



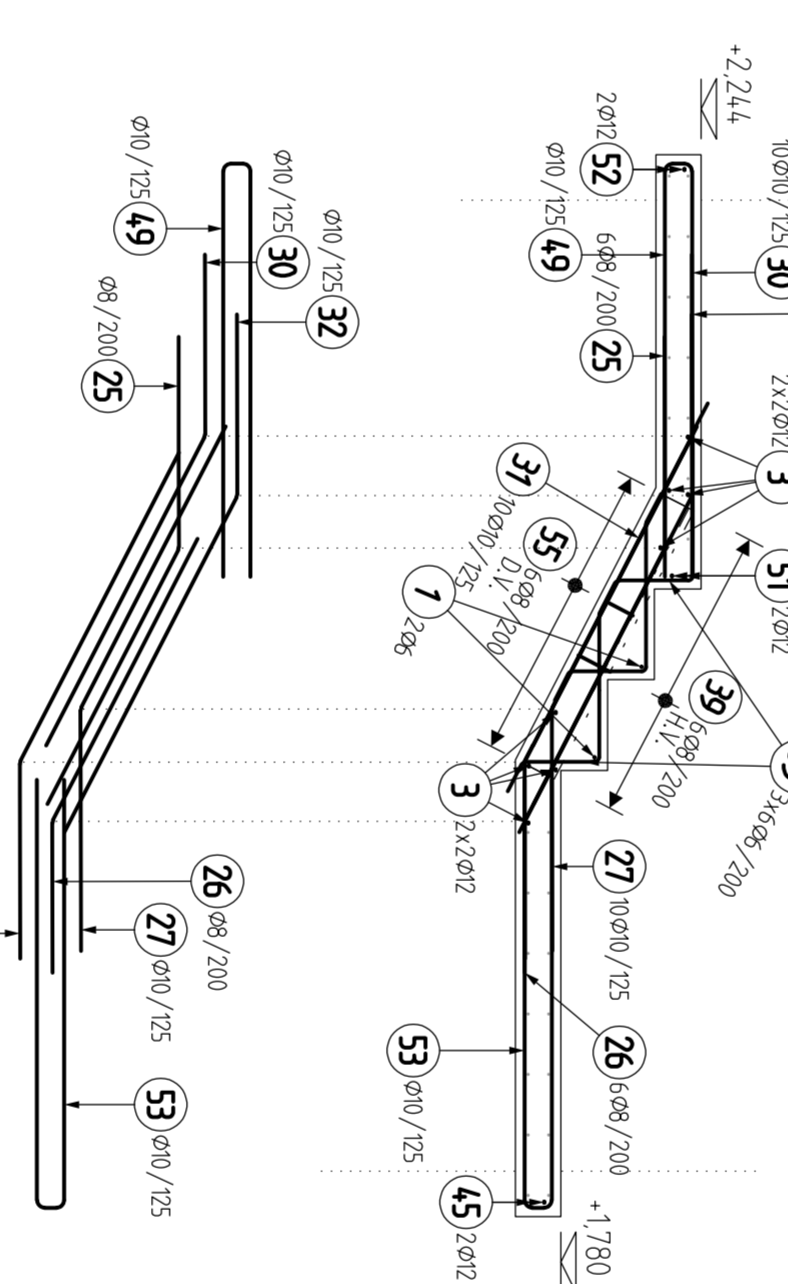
ŘEZ E-E

m1:25



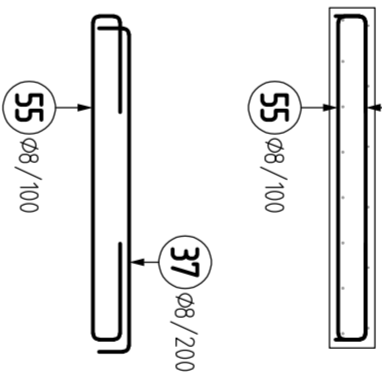
ŘEZ D-D

m1:25

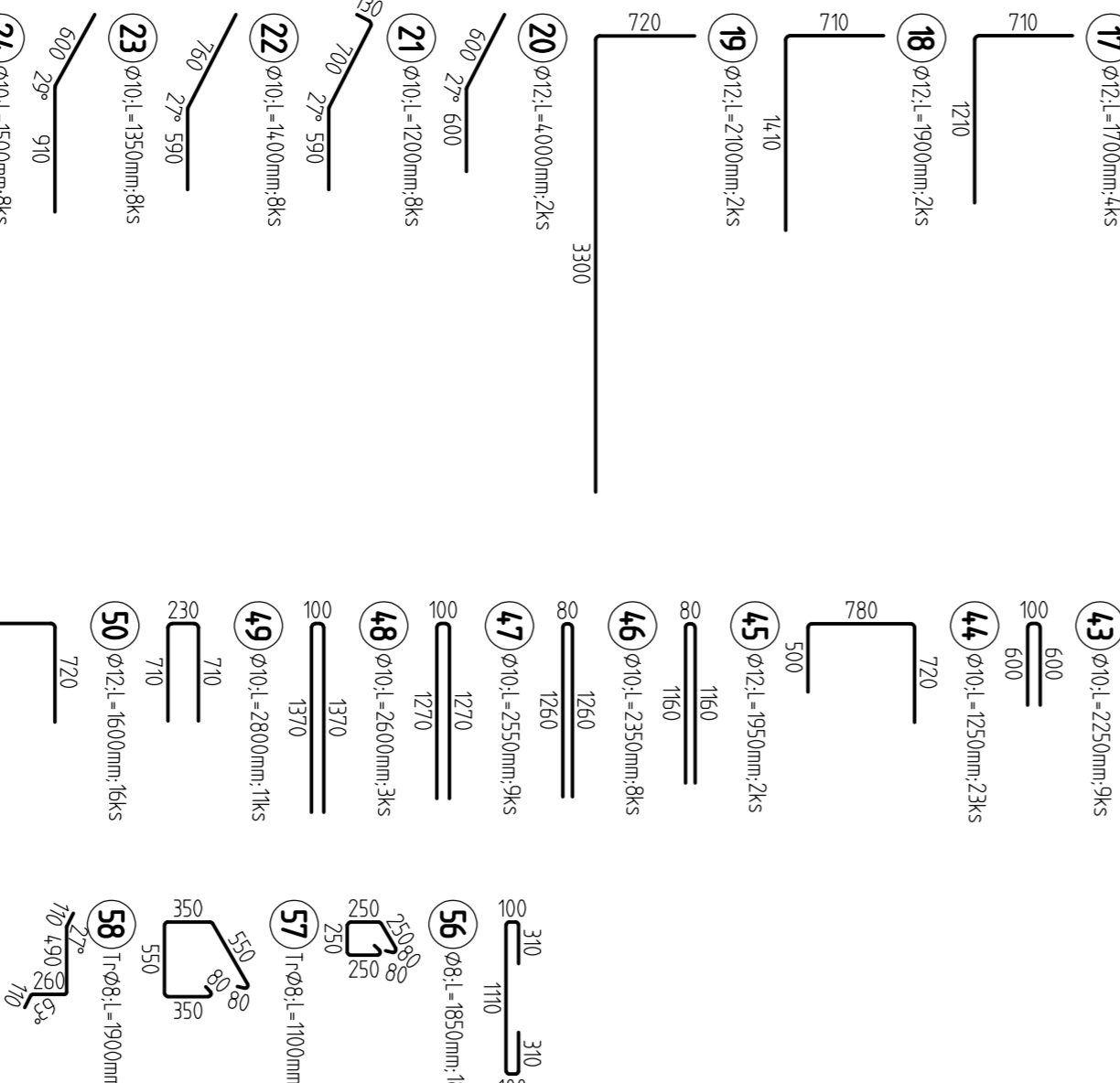


TPICKÝ ŘEZ RAMENEM SCHODIŠTĚ

m1:25

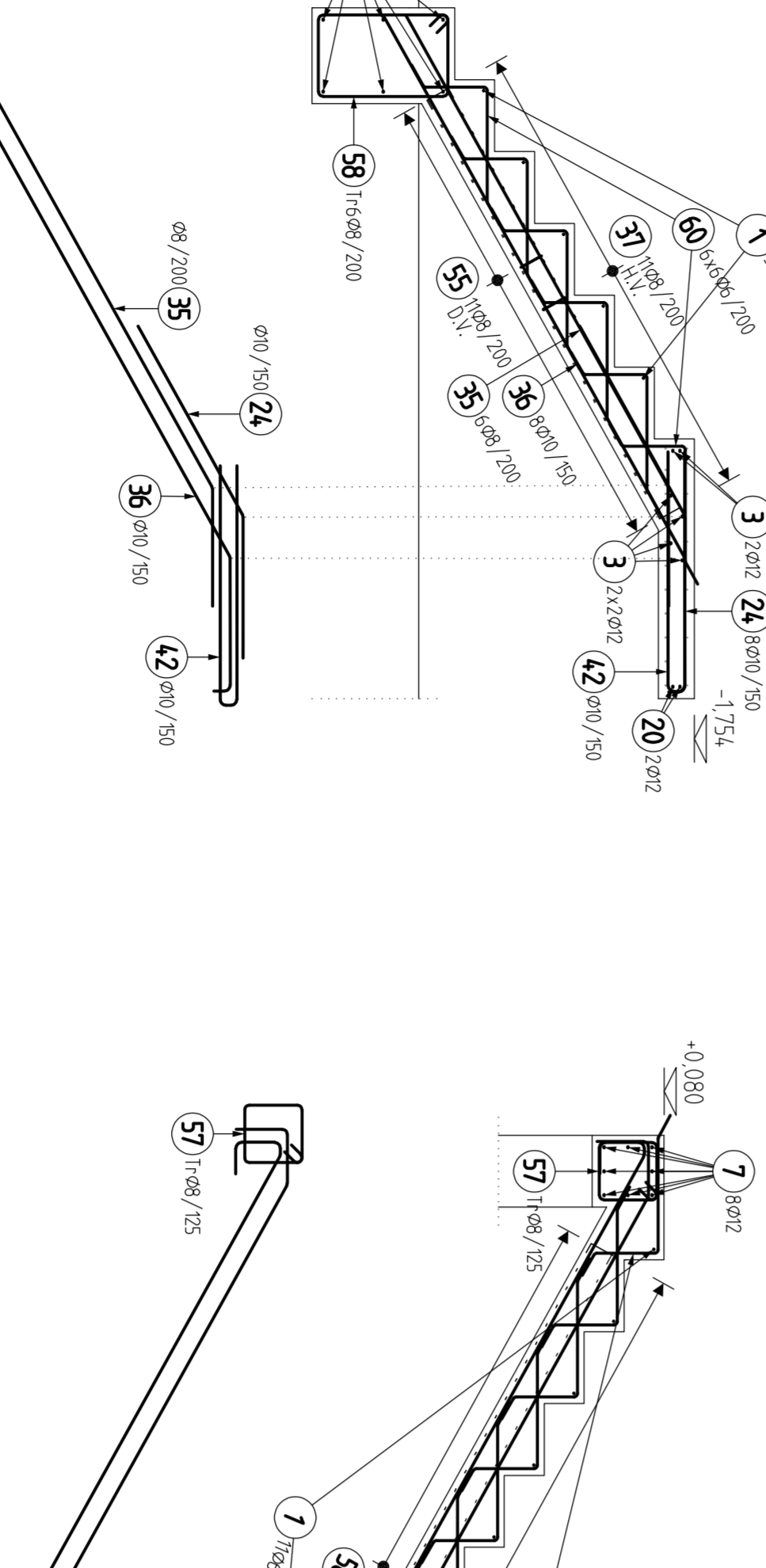


01.03.24 (5:41) VKAZ VÝTŽUŽE					
Profil	Delka	ks	B 500		
M1	6	1100	41	45.1	12
M2	6	1100	22	6.6	24.2
M3	12	1100	22	6.6	24.2
M4	12	3300	5	9.3	7.8
M5	12	3300	5	6.2	23.6
M6	8	3100	2	6.2	23.6
M7	12	3200	8	13.2	27.2
M8	12	3200	8	13.2	27.2
M9	8	3300	4	13.2	27.2
M10	12	3400	8	21.0	29.6
M11	8	3500	8	21.0	29.6
M12	8	3500	8	21.0	29.6
M13	10	1650	4	4.4	6.4
M14	12	1650	4	4.4	6.4
M15	12	1650	4	4.4	6.4
M16	12	1650	4	4.4	6.4
M17	12	1650	4	4.4	6.4
M18	12	1650	4	4.4	6.4
M19	12	1650	4	4.4	6.4
M20	12	1650	4	4.4	6.4
M21	12	1650	4	4.4	6.4
M22	12	1650	4	4.4	6.4
M23	12	1650	4	4.4	6.4
M24	12	1650	4	4.4	6.4
M25	12	1650	4	4.4	6.4
M26	12	1650	4	4.4	6.4
M27	12	1650	4	4.4	6.4
M28	12	1650	4	4.4	6.4
M29	12	1650	4	4.4	6.4
M30	12	1650	4	4.4	6.4
M31	12	1650	4	4.4	6.4
M32	12	1650	4	4.4	6.4
M33	12	1650	4	4.4	6.4
M34	12	1650	4	4.4	6.4
M35	12	1650	4	4.4	6.4
M36	12	1650	4	4.4	6.4
M37	12	1650	4	4.4	6.4
M38	12	1650	4	4.4	6.4
M39	12	1650	4	4.4	6.4
M40	12	1650	4	4.4	6.4
M41	12	1650	4	4.4	6.4
M42	12	1650	4	4.4	6.4
M43	12	1650	4	4.4	6.4
M44	12	1650	4	4.4	6.4
M45	12	1650	4	4.4	6.4
M46	12	1650	4	4.4	6.4
M47	12	1650	4	4.4	6.4
M48	12	1650	4	4.4	6.4
M49	12	1650	4	4.4	6.4
M50	12	1650	4	4.4	6.4
M51	12	1650	4	4.4	6.4
M52	12	1650	4	4.4	6.4
M53	12	1650	4	4.4	6.4
M54	12	1650	4	4.4	6.4
M55	12	1650	4	4.4	6.4
M56	12	1650	4	4.4	6.4
M57	12	1650	4	4.4	6.4
M58	12	1650	4	4.4	6.4
M59	12	1650	4	4.4	6.4
M60	12	1650	4	4.4	6.4
M61	12	1650	4	4.4	6.4
M62	12	1650	4	4.4	6.4
M63	12	1650	4	4.4	6.4
M64	12	1650	4	4.4	6.4
M65	12	1650	4	4.4	6.4
M66	12	1650	4	4.4	6.4
M67	12	1650	4	4.4	6.4
M68	12	1650	4	4.4	6.4
M69	12	1650	4	4.4	6.4
M70	12	1650	4	4.4	6.4
M71	12	1650	4	4.4	6.4
M72	12	1650	4	4.4	6.4
M73	12	1650	4	4.4	6.4
M74	12	1650	4	4.4	6.4
M75	12	1650	4	4.4	6.4
M76	12	1650	4	4.4	6.4
M77	12	1650	4	4.4	6.4
M78	12	1650	4	4.4	6.4
M79	12	1650	4	4.4	6.4
M80	12	1650	4	4.4	6.4
M81	12	1650	4	4.4	6.4
M82	12	1650	4	4.4	6.4
M83	12	1650	4	4.4	6.4
M84	12	1650	4	4.4	6.4
M85	12	1650	4	4.4	6.4
M86	12	1650	4	4.4	6.4
M87	12	1650	4	4.4	6.4
M88	12	1650	4	4.4	6.4
M89	12	1650	4	4.4	6.4
M90	12	1650	4	4.4	6.4
M91	12	1650	4	4.4	6.4
M92	12	1650	4	4.4	6.4
M93	12	1650	4	4.4	6.4
M94	12	1650	4	4.4	6.4
M95	12	1650	4	4.4	6.4
M96	12	1650	4	4.4	6.4
M97	12	1650	4	4.4	6.4
M98	12	1650	4	4.4	6.4
M99	12	1650	4	4.4	6.4
M100	12	1650	4	4.4	6.4



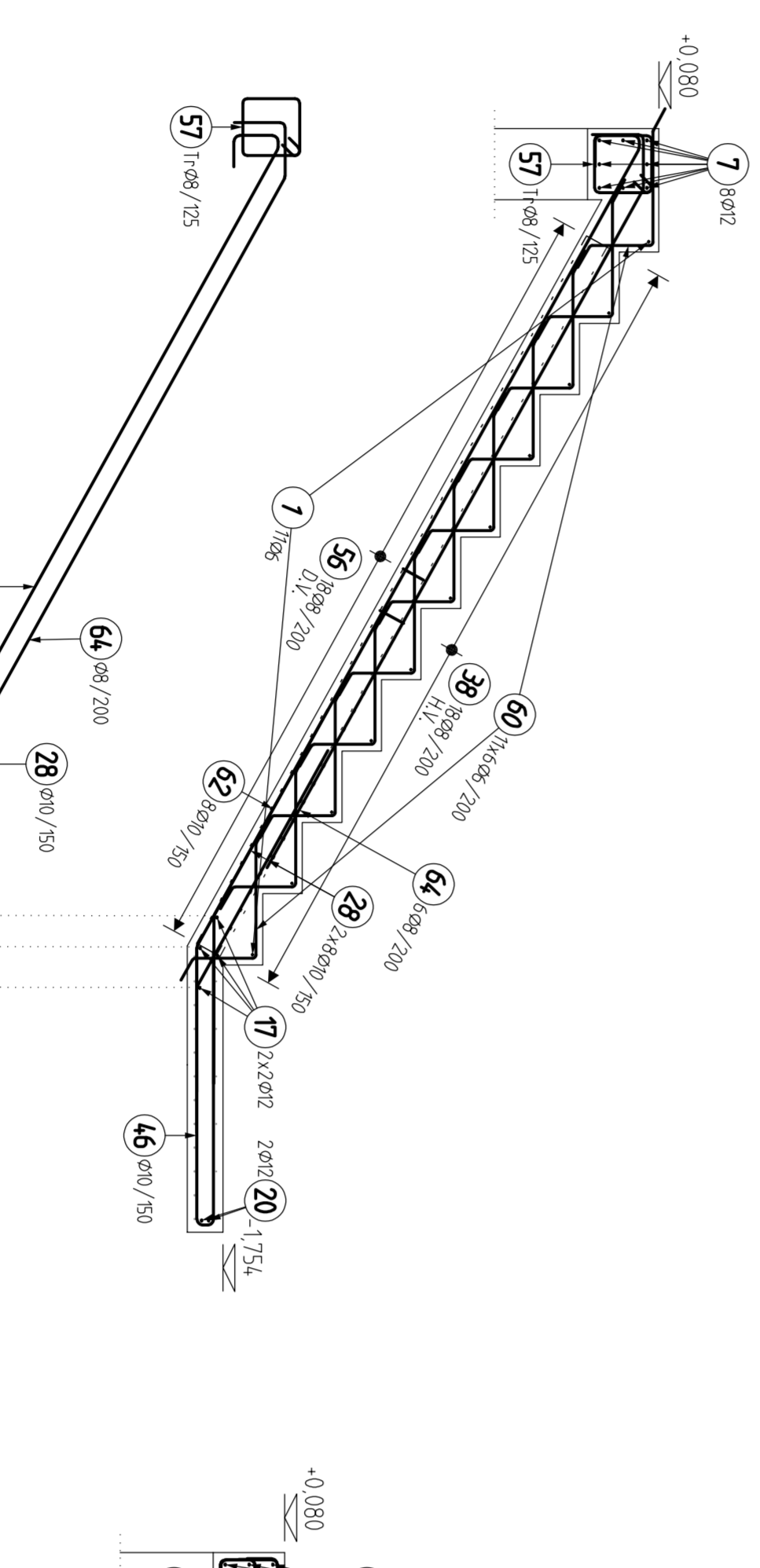
ŘEZ A-A

m1:25



ŘEZ B-B

m1:25



ŘEZ C-C

m1:25

